

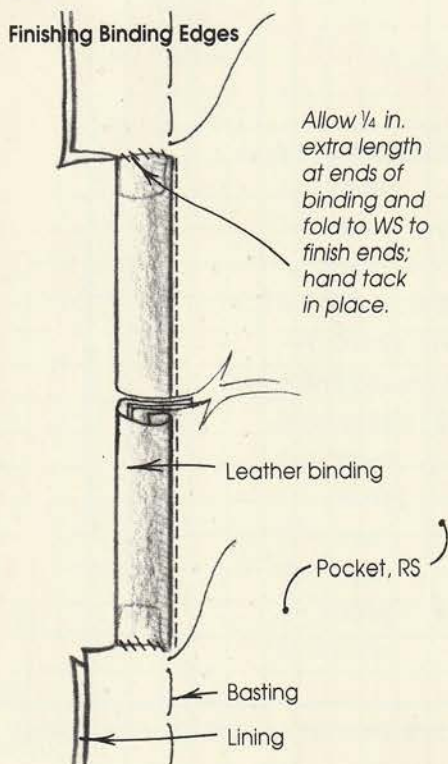
Sewing Instructions for Cashin Coat

Fabrics: Wool tweed, bouclé, melton, wool double-cloth, hand-loomed mohair. Not suitable for obvious diagonals.

Yardage: 2 $\frac{2}{3}$ yds. 56-in. to 60-in. wide fashion fabric. $\frac{1}{3}$ yd. lightweight pocket lining, 7 $\frac{1}{2}$ yds. leather or suede binding (1 $\frac{1}{2}$ in. wide); add 1 $\frac{1}{4}$ yds. if binding interior underarm seam. If you're binding with synthetic leather or suede, $\frac{1}{3}$ yd. of 45-in. fabric is plenty, assuming you cut the strips 1 $\frac{1}{2}$ in. wide on the cross grain.

Step 1: For each pocket, place pocket lining over pocket piece, wrong side of pocket to right side of lining. (This assumes that you will want the wrong side of the finished pocket to match the wrong side on the interior of the coat.) Stitch together along curved edges. Trim seams to $\frac{1}{8}$ in., press open, and turn lining to inside. Press flat. This step encases the raw edges inside the pocket.

Step 2: To bind pocket mouth, slash seam allowance of pocket and lining to circles and trim away allowances at opening. Baste raw edge of lining to raw edge of pocket along entire straight edge. Apply leather binding to pocket mouth, catching lining too: Staystitch the raw edge at a scant $\frac{1}{4}$ in., then stitch binding to edge at $\frac{1}{4}$ in., face down to pocket side (more details on p. 37, Threads #31). Fold binding over edge, baste, then stitch in the ditch from the pocket side to secure, and trim close to stitching. Tuck the raw edges at each end of binding strips under and tack, as shown in the drawing below.



A note on sizing

The Cashin coat is remarkably adaptable to a wide range of sizes, probably because there are no precise fitting points, like shoulder seams, cuffs, or a waistline. The coat is 46 $\frac{3}{8}$ in. long in front and 44 $\frac{1}{2}$ in. in back, 50 in. around at the underarm, and 56 in. from sleeve hem to sleeve hem. It looks great on anyone from a 5 ft. 10 in. size 18 to a 5 ft. 4 in. size 8. Body and sleeve length are the only

Step 3: Position pockets on inside of coat along placement lines indicated on pattern. Baste into position. The raw edges on either side of the bound openings will be caught when leather binding or other edge finishing is applied to coat edges.

Step 4: Topstitch pockets to coat, stitching through all thicknesses $\frac{1}{4}$ in. from pocket edges. This stitching will show on the front of the coat, so if you are working with a fabric that will not camouflage the stitching, be very careful to make the stitching lines smooth and precise. One method is to make a cardboard template from the topstitching guide, and use it to trace the guide exactly onto the coat front, then topstitch pocket from the coat side.

Step 5: Fold fabric at shoulder point (point G), right sides together, and stitch each underarm seam starting at slash on side seam, pivoting at circle and matching notches on sleeve seams. Slash to circle after seam is sewn.

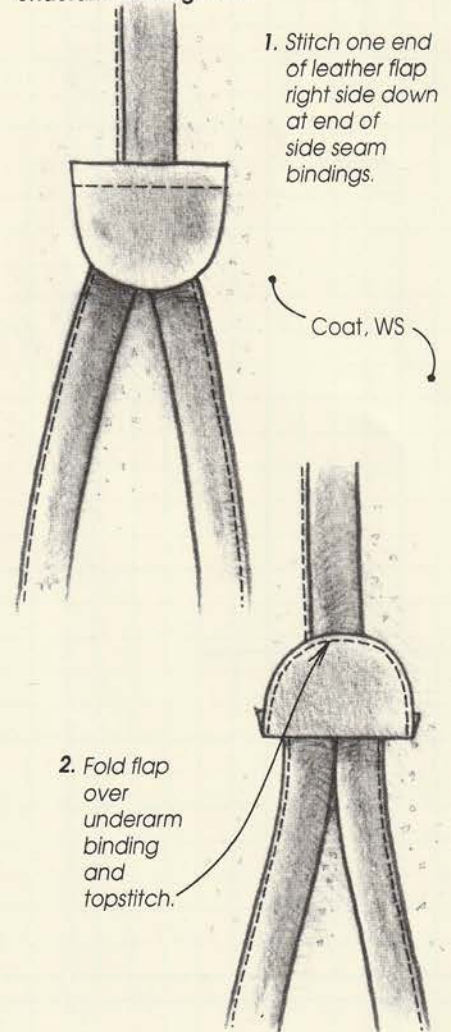
Step 6: On the Cashin coat this interior underarm seam allowance is bound with leather. If you want this type of finish, do it now. Stitch the binding strip to the seam allowance before you trim and grade the seam, then fold binding over and stitch in the ditch to secure. An alternative method is to use a flat-felled seam.

feasible places to alter the garment, if necessary. To alter the length, slash and spread (or overlap) front and back equally on horizontal lines anywhere below the side seam opening, then redraw the side seams so they're straight lines again. Adjust the pocket opening edge to match the new side seam angle. To alter the sleeve length, simply add or subtract at the sleeve hem; the limiting factor is of course the width of your fabric.

Step 7: Bind all seams (center front, side seams to slash, hem, and sleeve hems) in leather as described in Step 2, or use an alternate finish. If using leather strips seamed together, position a seam at neckline center back and work outwards from there.

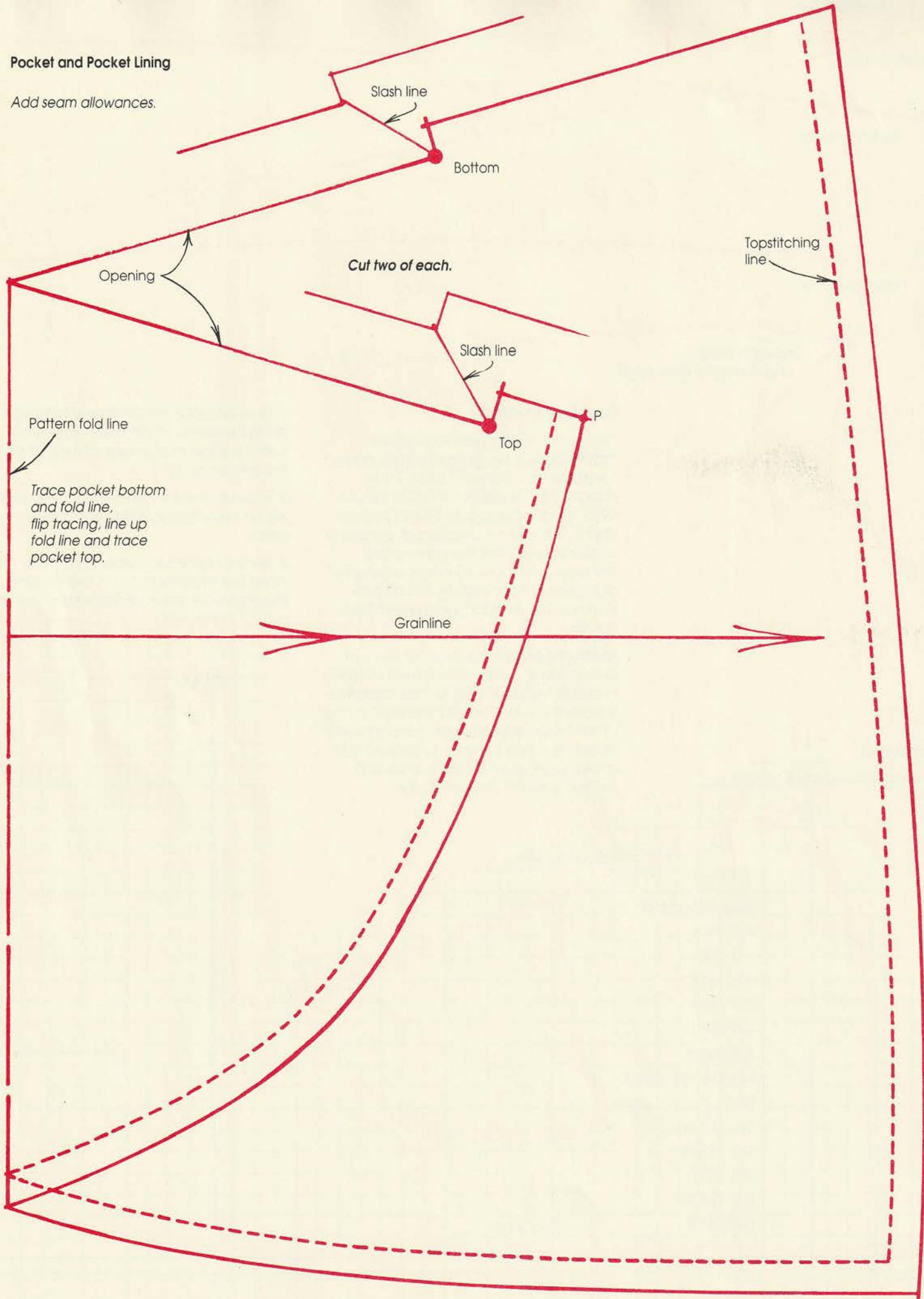
Step 8: On the Cashin coat a small piece of leather is used at the interior junction of the side seam slash and underarm seam to cover the three binding junctions, as shown in the drawing at right. Machine or hand-stitch in place, with underarm seam binding folded to the back.

Underarm Binding Finish



Pocket and Pocket Lining

Add seam allowances.



Slash line

Bottom

Opening

Cut two of each.

Slash line

Top

P

Topstitching line

Pattern fold line

Trace pocket bottom and fold line, flip tracing, line up fold line and trace pocket top.

Grainline

Neckline curve

8

Back hem curve

A

Front hem curve

X,Y

Underarm curve

Flip tracing for back curve.

3, 6

Enlarging the pattern

Enlarge the pattern gridded below by transferring it to 1-in. gridded pattern paper (available from G-Street Fabrics, 11854 Rockville Pike, Rockville, MD 20852, 301-231-8998; 20 yds. costs approx. \$10), or you can draft it, following the directions given here. In either case you'll find the task simplified because we've included full-size drawings of all the curves in the original, including the entire pocket, for tracing with dressmakers' carbon.

To draft the pattern, you'll need a piece of paper at least 3 yds. x 30-in. (check stationery or drafting supplies stores, or tape together a few lengths of shelf or butcher paper), a long straight-edge, like a yard stick, and a drafting triangle or a tailor's square, for drawing right angles. Tape your paper to your working surface; a smooth floor will do fine.

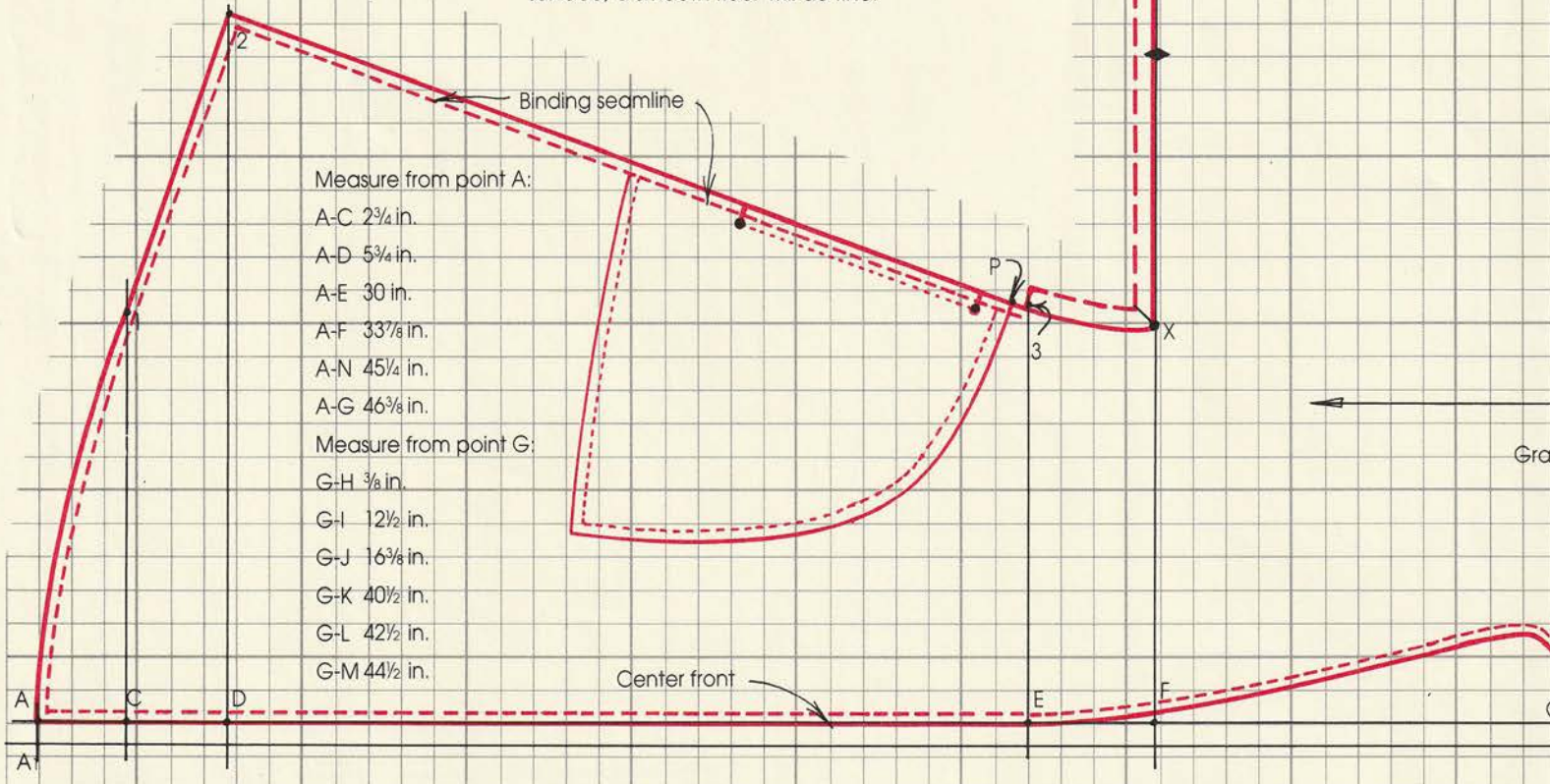
1. Draw and label line AB at least 92 in. long along the bottom of the paper, at least 1 in. from the edge; mark point A at the start of the line, on the left.

2. Draw another line, line A1B1, parallel to line AB, and exactly 3/8-in. below it, as shown below.

3. Starting at point A, measure and mark along line AB points C, D, E, F, and G, using the dimensions shown on the pattern. Transfer point G to line A1B1.

Coat Pattern

Add seam allowances if needed.



- Starting at point G, measure and mark along line A₁B₁ points H, I, J, K, L, and M, as above.
- Draw lines at right angles to line AB, using the dimensions shown on the pattern, from point C to point 1, from point D to point 2, from point E to point 3, from point F to point 4 (no lines from points G or H).
- Draw lines at right angles to line A₁B₁, using the dimensions shown on the pattern, from point I to point 5, from point J to point 6, from point K to point 7, and from point L to point 8.

- On line F4, mark point X, as shown.
- On line I 5, mark point Y, as shown.
- Using these points as guides, trace the pattern curves above onto the draft as shown.
- Connect points 1 and 2, 2 and 3, 4 and 5, 6 and 7, and 7 and 8 with straight lines.
- Mark point P $\frac{5}{8}$ in. below point 3 on line 2-3.
- On a separate piece of paper, trace the pocket pattern and topstitching guide overleaf, and add seam allowances to all edges. Then transfer the topstitching guide and pocket opening circles to the coat pattern, matching points P.
- Draw notches and circles on the outline as shown.

This outline is the pattern, with no seam allowances. If you're going to bind the edges with leather, you'll only need seam allowances at the underarms as shown on the gridded pattern, and around the pocket. If you're planning some other kind of edge finish, add appropriate seam allowances all around.

